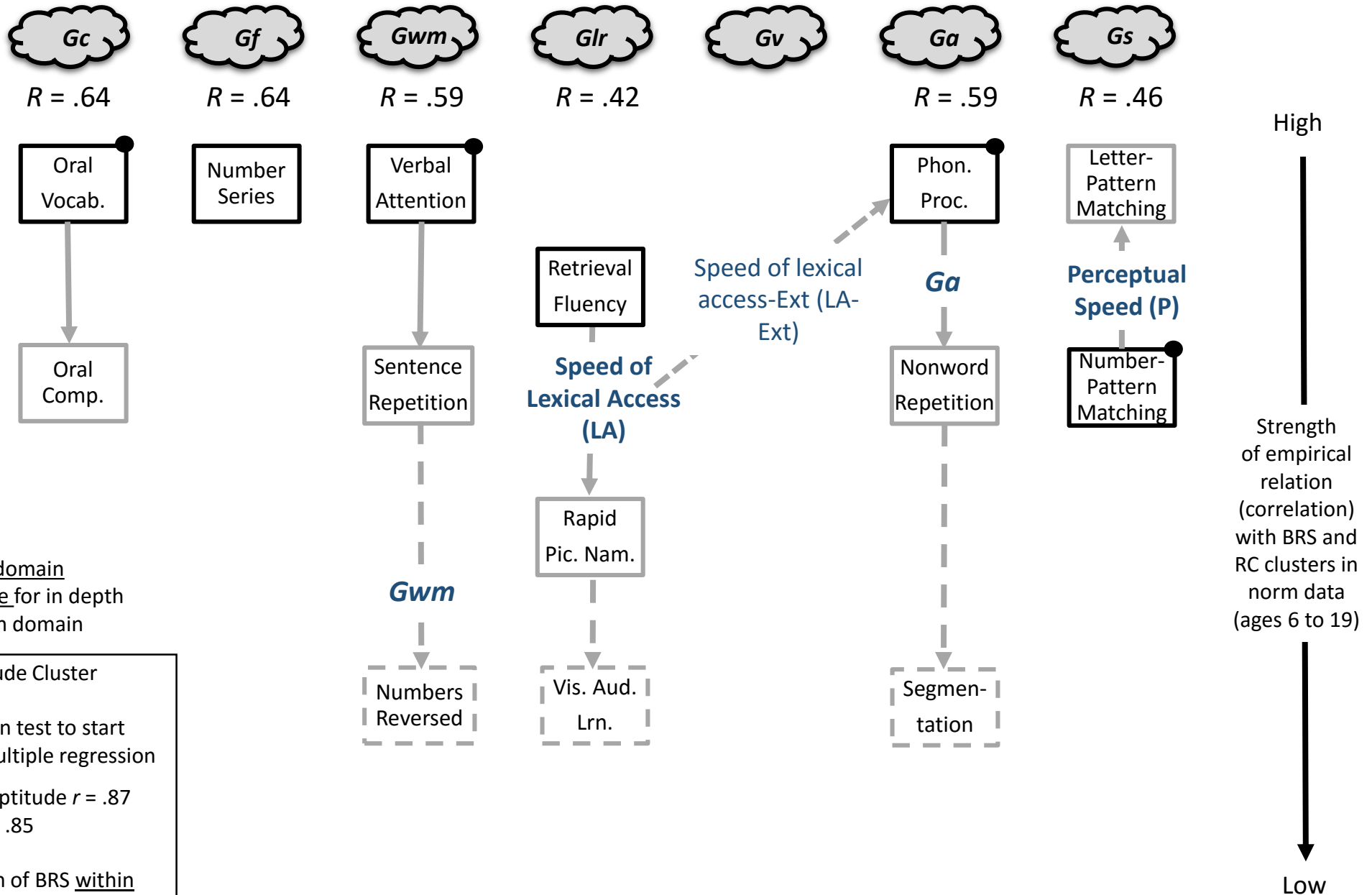
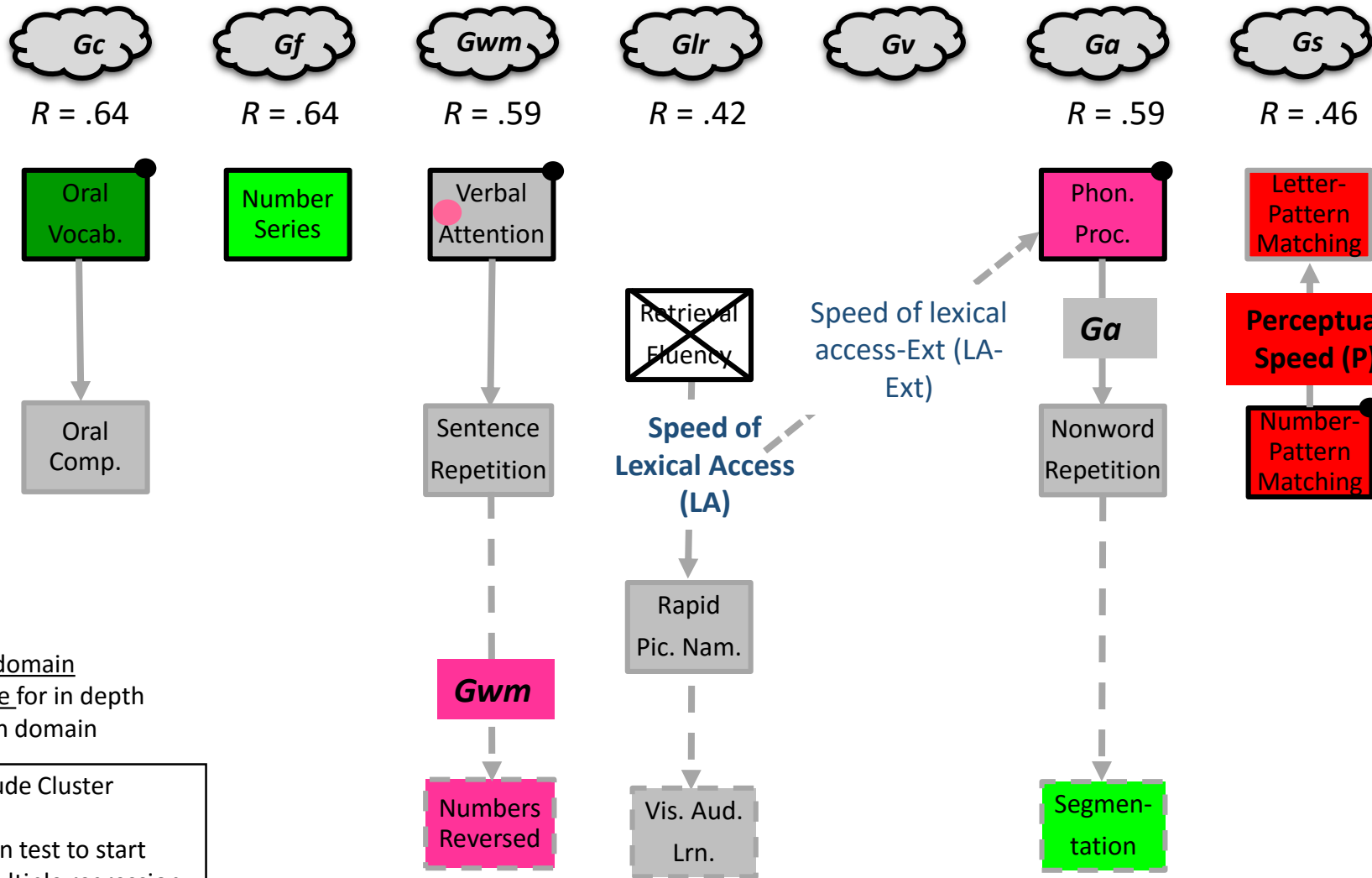


# WJ IV Basic Reading Skills assessment tree – Selective+ *ach-domain* tree



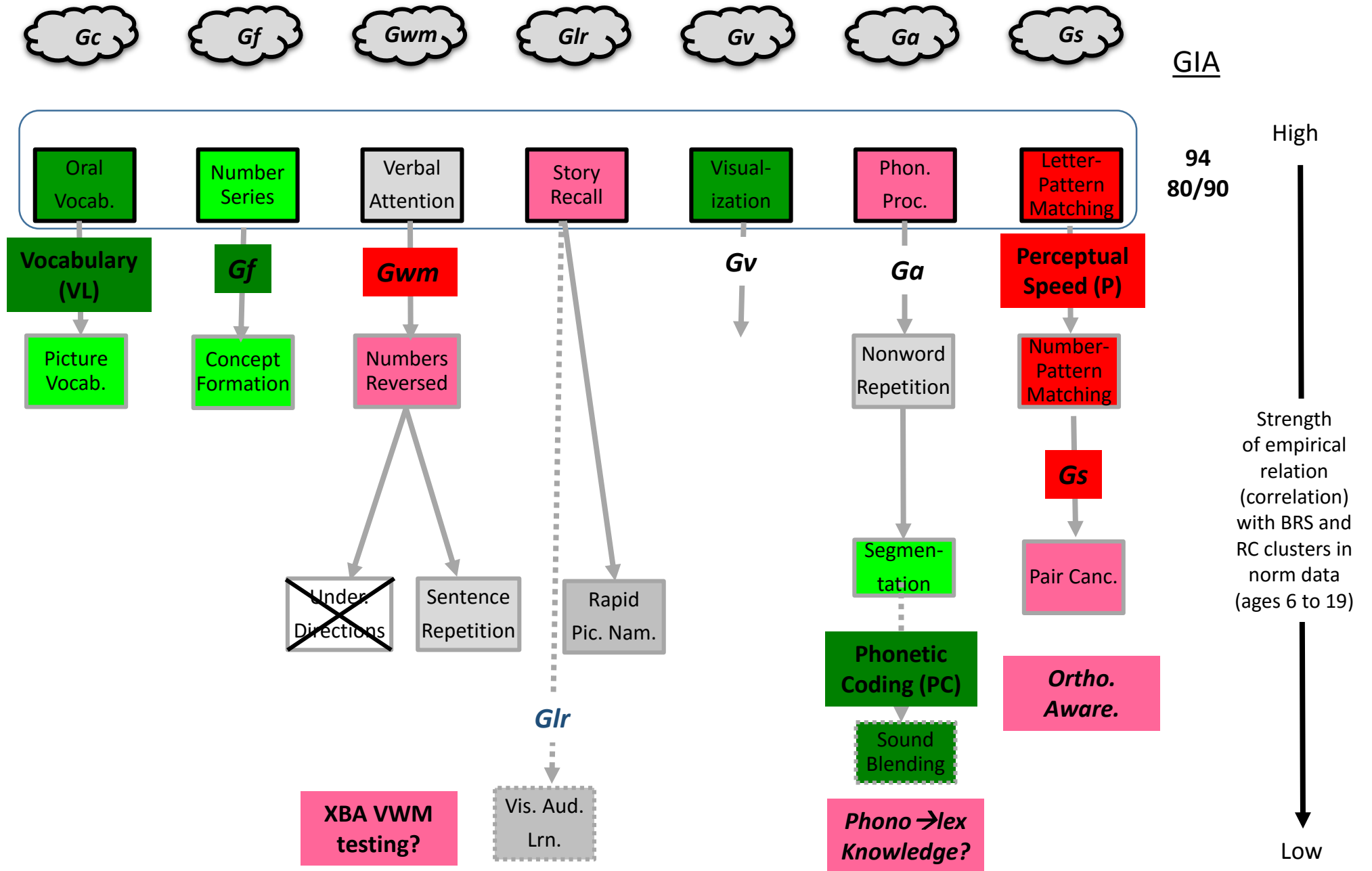
# WJ IV Basic Reading Skills assessment tree – Selective+ *ach-domain* tree



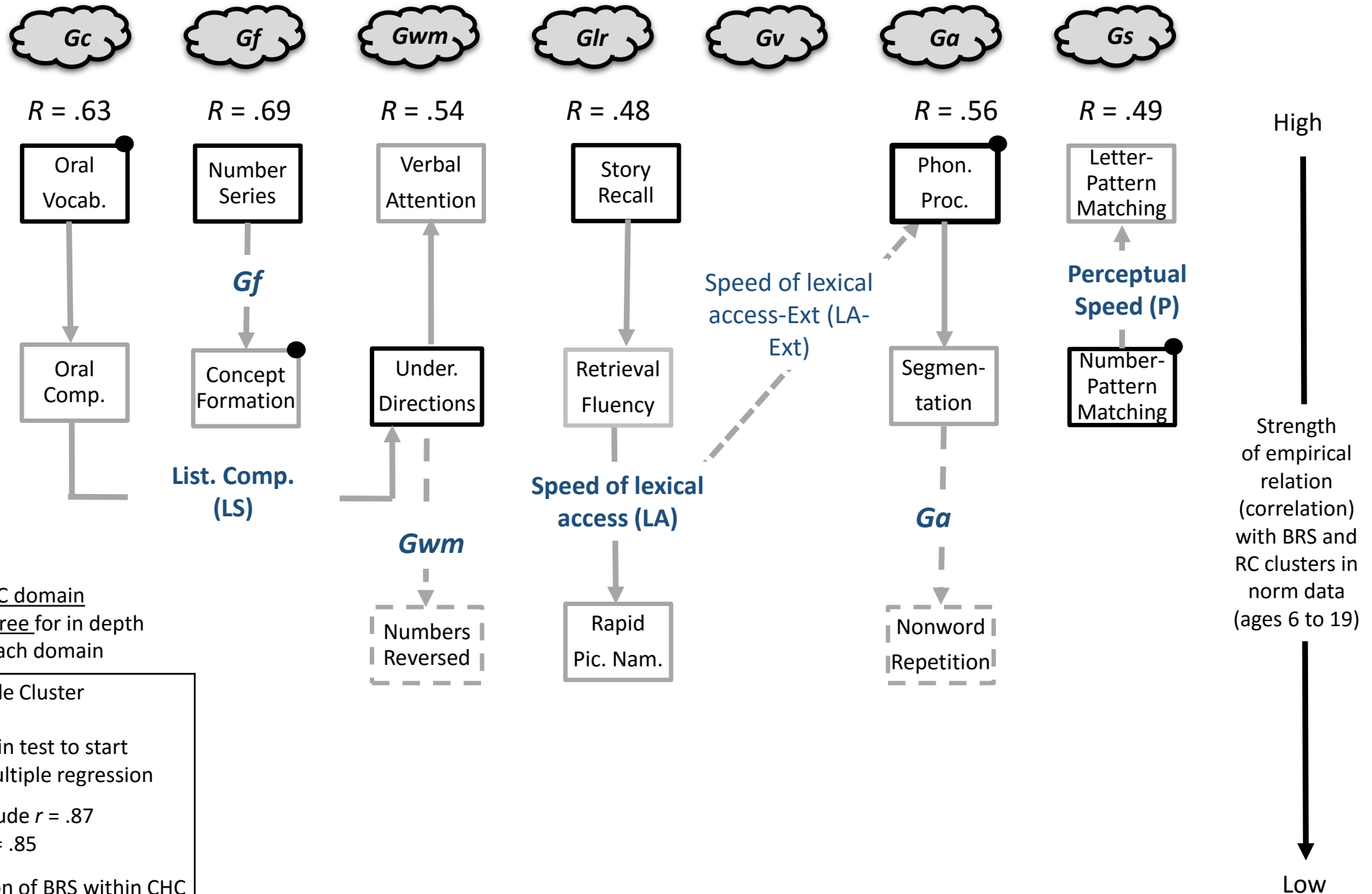
See within CHC domain assessment/interp. tree for in depth assessment in each domain

- BRS Scholastic Aptitude Cluster
- Within CHC domain test to start with, based on multiple regression
- GIA/BRS RC Scholastic Aptitude  $r = .87$
- Gs/Perceptual Speed  $r = .85$
- $R =$  multiple  $R$  prediction of BRS within CHC domain

# WJ IV Basic Reading Skills and Comprehension– Core GIA+ cluster *ach-domain* tree



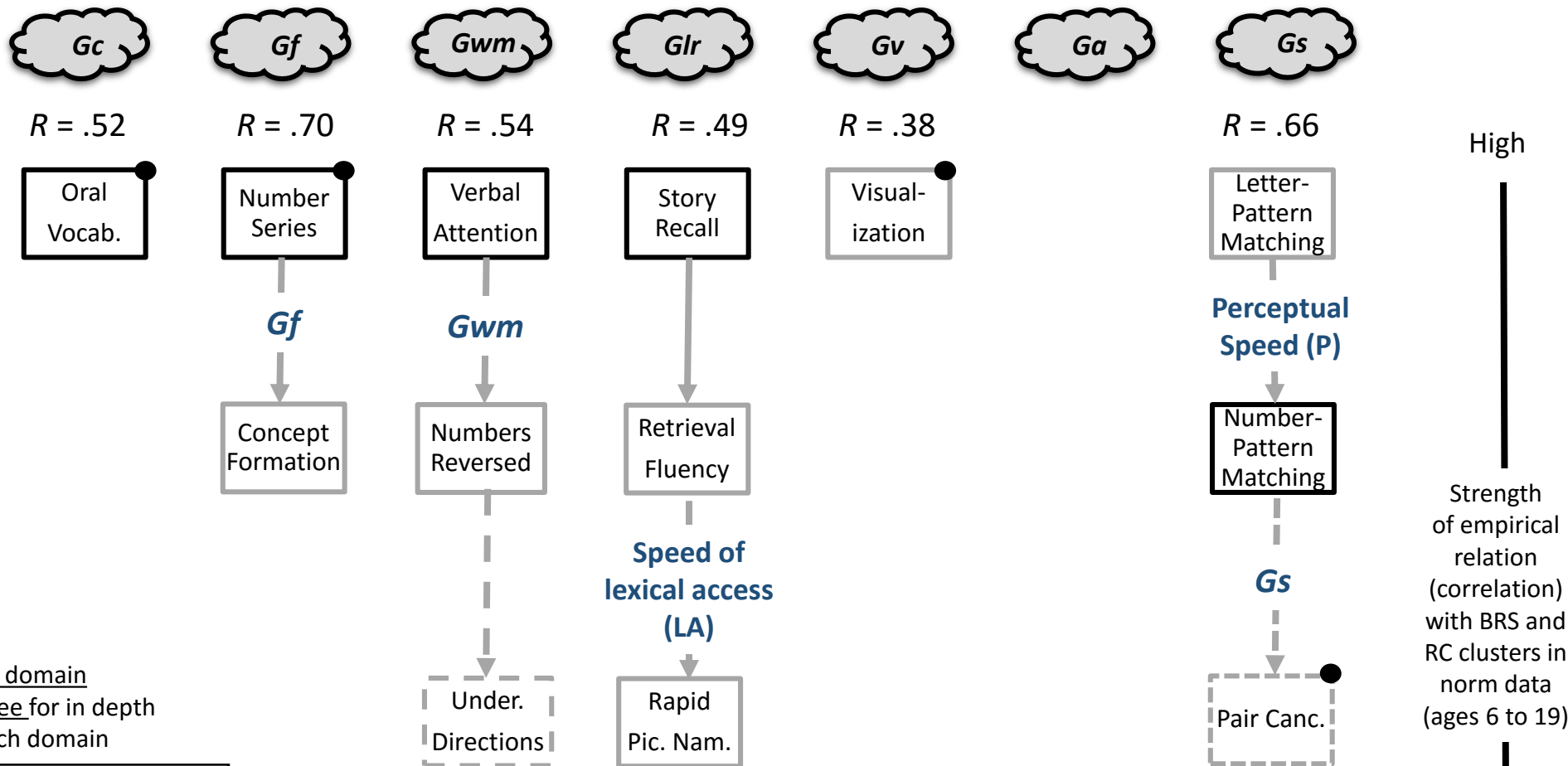
# WJ IV Reading Comprehension – Selective+ *ach-domain* tree



See within CHC domain assessment/interp. tree for in depth assessment in each domain

- RC Scholastic Aptitude Cluster
- Within CHC domain test to start with, based on multiple regression
- GIA/RC Scholastic Aptitude  $r = .87$
- Gs/Perceptual Speed  $r = .85$
- $R =$  multiple  $R$  prediction of BRS within CHC domain

# WJ IV Math Calculation Skills – Selective+ *ach-domain* tree



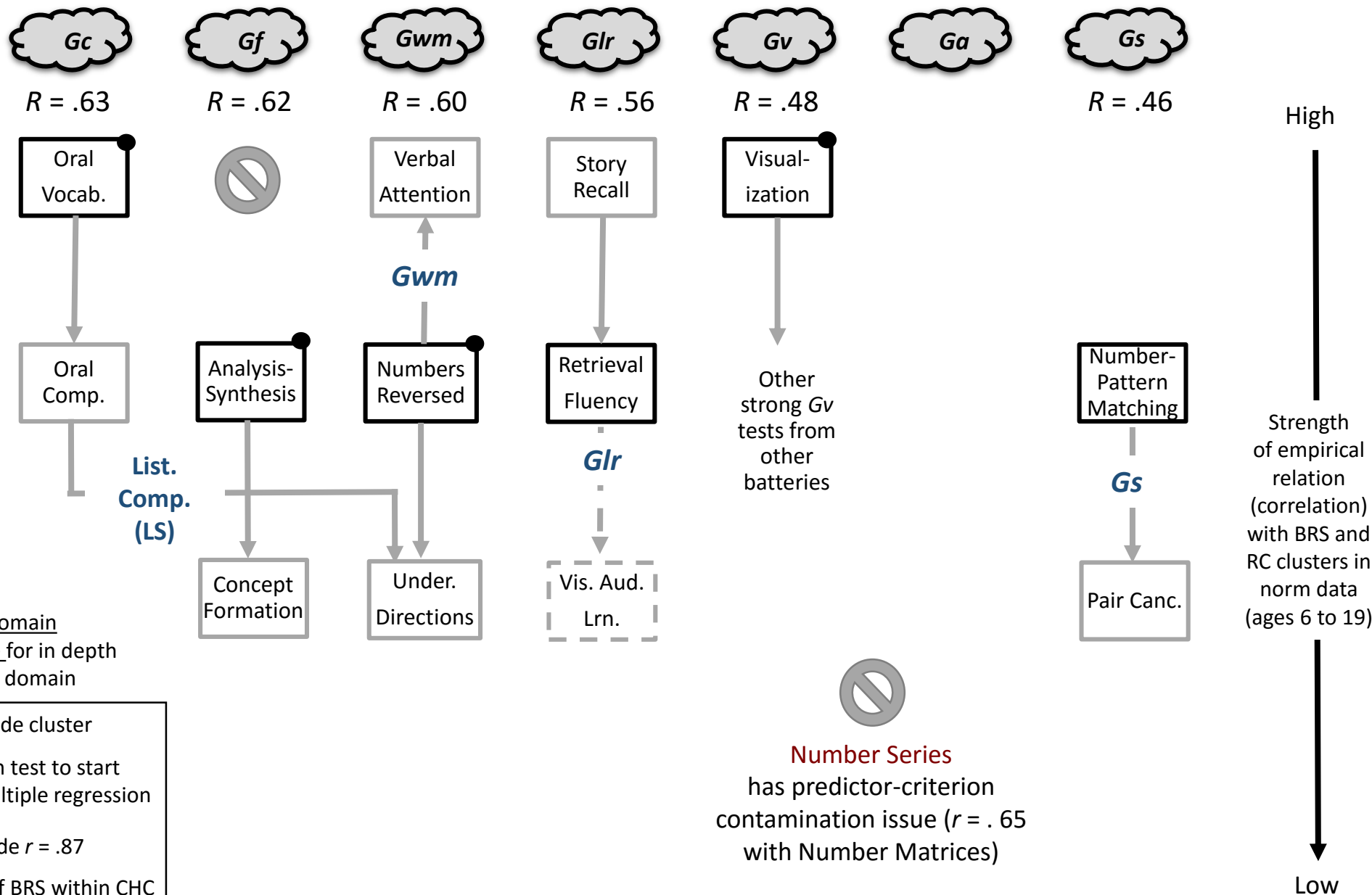
See within CHC domain assessment/interp. tree for in depth assessment in each domain

- MCS Scholastic Aptitude cluster
- Within CHC domain test to start with, based on multiple regression

GIA/MCS Scholastic Aptitude  $r = .87$   
 Gs/Perceptual Speed  $r = .85$

$R =$  multiple  $R$  prediction of BRS within CHC domain


# WJ IV Math Problem Solving – Selective+ *ach-domain* tree (Number Series excluded)



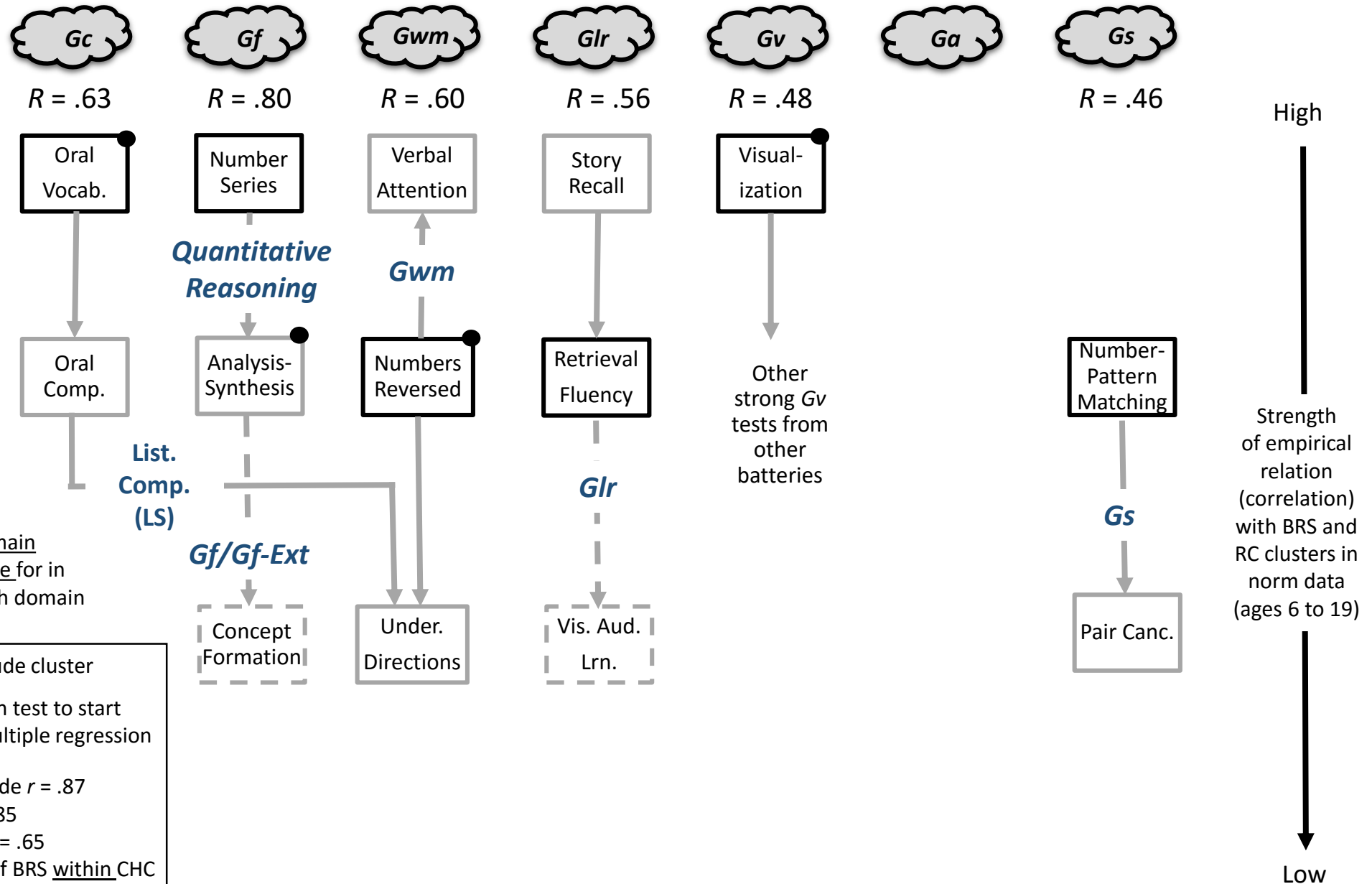
See within CHC domain assessment/interp. tree for in depth assessment in each domain

- MPS Scholastic Aptitude cluster
- Within CHC domain test to start with, based on multiple regression

GIA/MPS Scholastic Aptitude  $r = .87$   
 $R =$  multiple  $R$  prediction of BRS within CHC domain

  
**Number Series**  
 has predictor-criterion contamination issue ( $r = .65$  with Number Matrices)

# WJ IV Math Problem Solving – Selective+ *ach-domain* tree (with Number Series included)

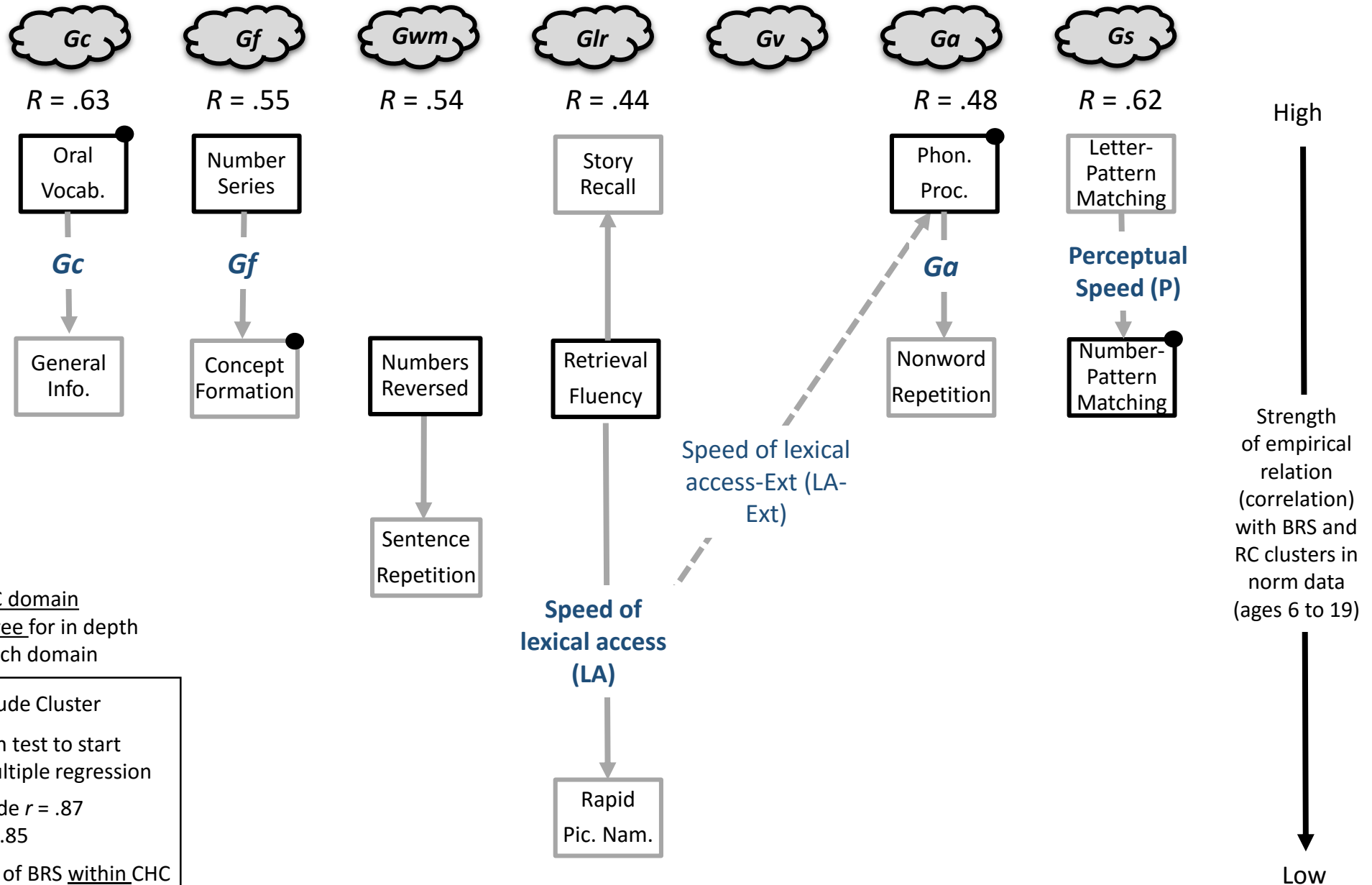


See within CHC domain assessment/interp. tree for in depth assessment in each domain

- MPS Scholastic Aptitude cluster
- Within CHC domain test to start with, based on multiple regression

GIA/MPS Scholastic Aptitude  $r = .87$   
 Gf/ Quant. Reasoning  $r = .85$   
 Number Series/Matrices  $r = .65$   
 R = multiple R prediction of BRS within CHC domain

# WJ IV Reading Fluency – Selective+ *ach-domain* tree



See within CHC domain assessment/interp. tree for in depth assessment in each domain

● RF RR Scholastic Aptitude Cluster

□ Within CHC domain test to start with, based on multiple regression

GIA/RF Scholastic Aptitude  $r = .87$

Gs/Perceptual Speed  $r = .85$

R = multiple R prediction of BRS within CHC domain